

Baskets

- Gasketed and seated to prevent particle bypass around the basket.
- Large Open Area Ratios ensure minimum pressure drop across the unit.
- See Technical Data section of the Mueller Steam Specialty Engineering binder.

MODEL	SIZES	STANDARD (Water),	
		MATERIAL	OPENING
691MFA 692MFB 692MFD 692MFH	8" - 16"	304SS	.125 perf

Material

	691MFA,	692MFB,	692MFD,	692MFH.
Body	Cast Iron ASTM A126 B	Bronze ASTM B62 (85-5-5-5)	Carbon Steel ASTM A216 WCB	Stainless Steel ASTM A351 CF8M
Cover	Plate A516-70	Bronze Plate	Carbon Steel Plate 516-70	Stainless Steel Plate A240-316
Seat	Bronze	Bronze	Bronze	A351-CF8M
Shaft	316SS	316SS	316SS	316SS
O-ring Seals	Buna-N	Buna-N	Buna-N	Buna-N

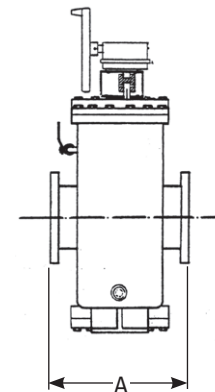
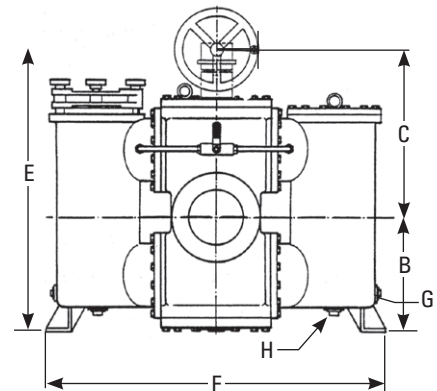
For stainless steel pickling and passivation available upon request. Consult factory.

Dimensions and Weights

SIZE		DIMENSIONS								WEIGHT							
		A		B		C		E Screen Removal		F		G (NPT)		H (NPT)			
in.	mm	in.	mm	in.	mm	in.	mm	in.	mm	in.	mm	in.	mm	in.	mm	in.	mm
8	200	20	508	19	483	24 ⁹ / ₁₆	623	62	1575	54 ³ / ₄	1391	1	25	2	50	1365	620
10	250	24	610	20 ¹ / ₂	521	28 ³ / ₄	730	72 ¹ / ₂	1842	61	1549	1	25	2	50	1970	894
12	300	30	762	25 ¹ / ₂	648	30 ³ / ₄	781	87 ¹ / ₂	2223	65 ⁷ / ₈	1673	1	25	2	50	2800	1272
14	350	32	813	27 ⁷ / ₈	708	30 ³ / ₈	765	95 ¹ / ₂	2426	71	1803	1	25	2	50	3300	1500
16	400	36 ³ / ₄	933	32	813	34 ³ / ₄	883	80 ¹ / ₂	2045	80 ¹ / ₂	2045	1 ¹ / ₂	40	2	50	4400	2000

Apply For Certified Drawings.

Note: Handwheel dimension is 18"



Models: 691, 692

Mueller Steam Specialty product specifications in U.S. customary units and metric are approximate and are provided for reference only. For precise measurements, please contact Mueller Steam Specialty Technical Service. Mueller Steam Specialty reserves the right to change or modify product design, construction, specifications, or materials without prior notice and without incurring any obligation to make such changes and modifications on Mueller Steam Specialty products previously or subsequently sold.

