

Models: 65M, 66M

Cast Iron Wafer and Full Lug Butterfly Valves Sizes: 2" - 36" (50 - 900)

Pressure / Temperature - Non-Shock			
Model	Size	Material	Rating
65M	2" - 12"	Cast Iron	200psi @ 100°F
66M	2" - 12"	Cast Iron	200psi @ 100°F
66M	14" and larger	Cast Iron	150psi @ 100°F

Max. temp. can be limited by gasket material. Consult factory. 100% Hydrostatically tested.



Model 65M (wafer)



Model 66M (lug)

Typical Service

These soft-seated butterfly valves are designed for a variety of general applications in the control of water, steam, air, oil, gases, and corrosive media.

They are equally effective for on-off, throttling, isolation, and dead end requirements.

They are especially well suited for higher velocity service and vacuum service to 28" Hg.

Features

- Dual durometer seat features a tough wear resistant elastomer bonded to a phenolic backup ring on 2" - 14" sizes and, aluminum back-up ring on 14" - 36".
 - The soft elastic seat portion provides positive sealing
 - The backup ring provides strength for vacuum or high velocity services
 - The combination eliminates the need for flange gaskets
- Stem seals include a primary seal between the disc hub and the seat hub, along with secondary O-ring seals at the top and bottom of the seat
 - This retains lubrication and prevents corrosion from outside elements.
- Stem is retained in the body for blowout proof design
- ISO mount is standard
- Double D shaft is standard for ease of actuation
- Many material options available. See introductory pages of the Butterfly Valve section of the Mueller Steam Specialty Engineering binder for How to Order instructions and standard materials
- A variety of operators can be supplied
 - Multi-position lever operator
 - Gear Operator
 - Pneumatic, hydraulic, or electric actuators with solenoids, limit switches, positioners and more, consult factory

Job Name _____

Contractor _____

Job Location _____

Approval _____

Engineer _____

Contractor's P.O. No. _____

Approval _____

Representative _____

Construction

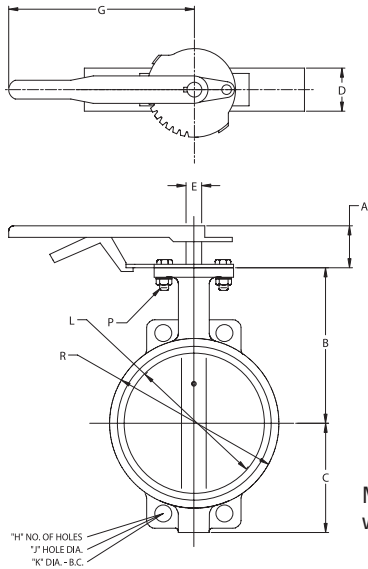
- ANSI 125 Flange Design
- One-piece stem

Performance Considerations

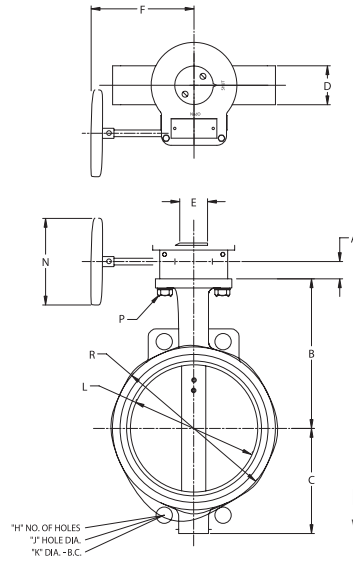
- Seat selections will limit temperature range
- Seat and body materials must be chosen carefully for compatibility with corrosive media applications.
- Guidelines for throttling service:
 - Liquids - Line velocity should not exceed 20 ft/sec
 - Gases - Line velocity should not exceed 15,000 ft/min.

Materials

	65M	66M
Body	Cast Iron ASTM A126 Gr. B	Cast Iron ASTM A126 Gr. B
Stem	416 SS, 316 SS	416 SS, 316 SS
Disc	Aluminum Bronze	Aluminum Bronze
	316 SS	316 SS
	Nickel Plated Ductile Iron Ductile Iron on 14" -36" Only	Nickel Plated Ductile Iron Ductile Iron on 14" -36" Only
Seat	EDPM, Buna-N	EDPM, Buna-N
O-Ring Seals	EDPM, Buna-N	EDPM, Buna-N



Model 65M – Wafer with Lever Operator

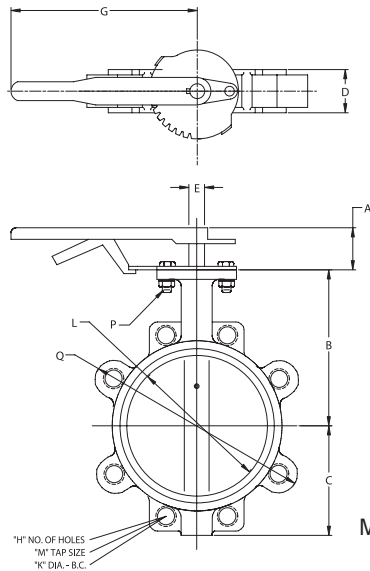


Model 65M – Wafer with Gear Operator

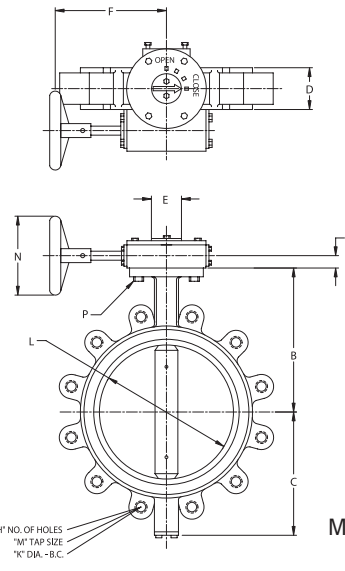
Dimensions and Weights Model 65M Wafer - 2"-36"

SIZE	DIMENSIONS															WEIGHT		
	A-1 Lever	A-2 Gear Op	B	C	D	E	F	G	H (wafer #holes)	J	K	L	N	P	R	Bare Stem	Gear	Lever
2" 50mm	1.25 32	1.5 38	6.375 162	3 76	1.812 46	.5 13	7 178	10.5 267	4	.687 17	4.75 121	2 51	6 150	F7	4.062 103	6 2.9	17.7 8.02	8 3.7
2.5" 65mm	1.25 32	1.5 38	6.875 175	3.5 89	1.937 49	.5 13	7 178	10.5 267	4	.687 17	5.5 140	2.5 64	6 150	F7	4.75 120	8 3.6	19.6 8.9	10 4.4
3" 80mm	1.25 32	1.5 38	7.125 181	3.75 95	1.937 49	.5 13	7 178	10.5 267	4	.687 17	6 152	3 76	6 150	F7	5.031 128	9 4	20 9.1	11 4.9
4" 100mm	1.25 32	1.5 38	7.875 200	4.5 114	2.125 55	.625 16	7 178	10.5 267	4	.687 17	7.5 191	4 102	6 150	F7	6.468 164	12.5 5.7	23 10.6	14 6.5
5" 125mm	1.25 32	1.5 38	8.375 213	5 127	2.312 59	.75 19	7 178	10.5 267	4	.812 21	8.5 216	5 127	6 150	F7	7.5 191	15.4 7	29 13.4	17 7.8
6" 150mm	1.25 32	1.5 38	8.875 225	5.5 140	2.312 59	.75 19	7 178	10.5 267	4	.812 21	9.5 241	6 152	6 150	F7	8 215.5	18.5 8.4	30 13.6	20 9.2
8" 200mm	1.437 36	1.333 35	10.25 260	7.75 197	2.531 64	.875 22	10 254	14 356	4	.812 21	11.75 289	8 203	10 250	F10	8.468 268	28 12.7	56.7 25.7	32.4 14.7
10" 250mm	1.437 36	1.333 35	11.5 292	8 203	2.812 72	1.125 29	10 254	14 356	4	.937 24	14.25 362	10 254	10 250	F10	12.75 324	42 19.2	71 32.2	47 21.2
12" 300mm	1.437 36	1.5 38	13.25 337	9.5 242	3.187 81	1.25 32	10 254	14 356	4	.937 24	17 432	12 305	10 250	F12	15.562 395	68 31	101.4 46	—
14" 350mm	1.75 45	1.5 38	14.5 368	10.5 267	3.125 80	1.25 32	10 254	—	4	1 25	18.75 476	13 328	10 250	F12	16.875 429	96 43.8	130 58.8	—
18" 450mm	2 51	1.5 38	16.625 422	12.5 318	4.281 109	1.5 38	10 254	—	4	1.125 28	22.75 578	17 431	10 250	F16	20.875 530.4	171 77.7	260 117.7	—
16" 400mm	2 51	1.5 38	15.75 400	11.75 298	3.531 90	1.281 33	10 254	—	4	1 25	21.25 540	15 378	10 250	F16	19.062 484	135 61.2	223 101.2	—
20" 500mm	2.5 64	1.5 38	18.875 479	13.75 349	5.312 135	1.625 41	12 297	—	4	1.187 30	25 635	19.25 489	12 300	F16	22.75 578	232 105.1	353 160.1	—
24" 610mm	2.75 70	2.5 64	22.125 562	16.125 409	6.125 156	2 51	12 297	—	4	1.375 35	29.5 749	23 588	12 300	F25	28.031 711.8	431 195.5	568 257.5	—
30" 762mm	2.812 72	6 152	25.5 648	19.5 495	6.875 175	2.5 63	14.5 367	—	4	1.25 37	36 914	29.25 742	20 500	F25	34.375 873.13	776 352	992 450	—
36" 914mm	3.333 77	10.75 273	26.687 768	24.062 611	8.312 211	2.968 74	16.5 419	—	4	1.5 38	42.75 1086	35.375 898	24 600	F25	43.75 1086	1187 538.5	1518 688.5	—

Note: Inches _____ *pounds _____ Dimensions and Weights (Approximate "Apply for Certified Drawings")
 millimeter _____ kilograms _____



Model 66M – Lug 2-12”



Model 66M – Lug 14-36”

Dimensions and Weights. Model 66M Lug - 2"-36"

SIZE	DIMENSIONS														WEIGHT			
	A-1 Lever	A-2 Gear Op	B	C	D	E	F	G	H (lug #holes)	K	L	M Tap Size	N	P	Q	Bare Stem	Gear	Lever
2" 50mm	1.25 32	1.5 38	6.375 162	3 76	1.812 46	.5 13	7 178	10.5 267	4	4.75 121	2 51	.625-11 16	6 150	F7	5.937 150.7	9.4 4.3	21 9.5	11 5.1
2.5" 65mm	1.25 32	1.5 38	6.875 175	3.75 95	1.937 49	.5 13	7 178	10.5 267	4	5.5 140	2.5 64	.625-11 16	6 150	F7	6.75 171.7	10 4.6	25 11.2	12 5.4
3" 80mm	1.25 32	1.5 38	7.125 181	4 101	1.937 49	.5 13	7 178	10.5 267	4	6 152	3 76	.625-11 16	6 150	F7	7.187 182.4	11 5	26 11.6	13 5.8
4" 100mm	1.25 32	1.5 38	7.875 200	4.75 120	2.125 55	.625 16	7 178	10.5 267	8	7.5 191	4 102	.625-11 16	6 150	F7	8.906 226.5	18 8.4	30 13.6	20 9.2
5" 125mm	1.25 32	1.5 38	8.375 213	5.25 140	2.312 59	.75 19	7 178	10.5 267	8	8.5 216	5 127	.75-10 19	6 150	F7	9.906 251.9	26 12	34 15.3	28 12.8
6" 150mm	1.25 32	1.5 38	8.875 225	5.75 146	2.312 59	.75 19	7 178	10.5 267	8	9.5 241	6 152	.75-10 19	6 150	F7	11.062 281.3	28 12.8	39 17.8	30 13.6
8" 200mm	1.437 36	1.333 35	10.25 260	7 177	2.531 64	.875 22	10 254	14 356	8	11.75 289	8 203	.75-10 19	10 250	F10	13.312 338.5	39 17.5	67 30.5	43 19.5
10" 250mm	1.437 36	1.333 35	11.5 292	8.25 209	2.812 72	1.125 29	10 254	14 356	12	14.25 362	10 254	.875-9 22	10 250	F10	16.125 410	61 27.7	90 40.7	65.5 29.7
12" 300mm	1.437 36	1.5 38	13.25 337	9.75 247	3.187 81	1.25 32	10 254	14 356	12	17 432	12 305	.875-9 22	10 250	F12	18.75 477.8	95 43.2	128 58.2	—
14" 350mm	1.75 45	1.5 38	14.5 368	11 279	3.125 80	1.25 32	10 254	—	12	18.75 476	13 328	1-8 25	10 250	F12	20.75 526.3	146 66.3	179 81.3	—
16" 400mm	2 51	1.5 38	15.75 400	12 304	3.531 90	1.281 33	10 254	—	16	21.25 540	15 378	1-8 25	10 250	F16	23.218 589.8	217 98.2	285 129.2	—
18" 450mm	2 51	1.5 38	16.625 422	14.25 362	4.281 109	1.5 38	10 254	—	16	22.75 578	17 431	1-125-7 28	10 250	F16	25.343 643.9	262 118.7	350 158.7	—
20" 500mm	2.5 64	1.5 38	18.875 479	14.5 368	5.312 135	1.625 41	12 297	—	20	25 635	19.25 489	1-125-7 28	12 300	F16	27.312 697	378 171.6	500 226.6	—
24" 610mm	2.75 70	2.5 64	22.125 562	17.343 444	6.125 156	2 51	12 297	—	20	29.5 749	23 588	1-25-7 31	12 300	F25	32 813.3	559 253.5	696 315.5	—
30" 762mm	2.812 72	6 152	25.5 648	24.5 621	6.875 175	2.5 63	14.5 367	—	28	36 914	29.25 742	1-25-7 32	20 500	F25	38.5 978	850 385.4	1066 483.4	—
36" 914mm	3.333 77	10.75 273	26.687 687	24.531 623	8.312 211	2.968 74	16.5 419	—	32	42.75 1086	35.375 898	1-5-6 38	24 600	F25	46.062 1170	1544 700	1874 850	—

Note: Inches millimeter *pounds kilograms Dimensions and Weights (Approximate "Apply for Certified Drawings")

Mueller Steam Specialty product specifications in U.S. customary units and metric are approximate and are provided for reference only. For precise measurements, please contact Mueller Steam Specialty Technical Service. Mueller Steam Specialty reserves the right to change or modify product design, construction, specifications, or materials without prior notice and without incurring any obligation to make such changes and modifications on Mueller Steam Specialty products previously or subsequently sold.

